

PrimeLine™ Syringe Pumps

PrimeLine™ Syringe Pump Features

- ❑ Spring loaded check valves allow operation in horizontal or vertical mounting orientation
- ❑ Graphical user interface via USB connection
- ❑ Wash seal option for pumping buffers
- ❑ Stepper motor with drive/controller
- ❑ Available with high pressure stainless steel
- ❑ OEM & material options are available
- ❑ Modbus RTU, RS485 serial communications protocol for OEM software control



3D Image

Specifications

Motor Description:

NEMA 17 triple stack step motor - pump controller with motor drive & controller

Power:

100 - 240 VAC, 50 - 60 Hz, 1 A Max

Operating Temperature:

4 - 40° C

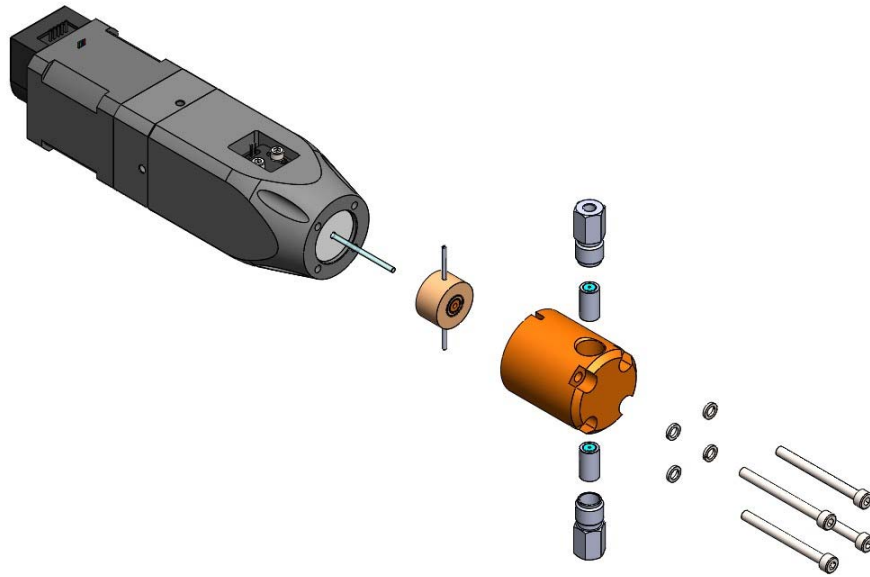
Dimensions:

11.2" L x 2.8" W x 3.9" H (with cover)

7.1" L x 1.7" W x 2.8" H (without cover)



Typical Exploded Assembly

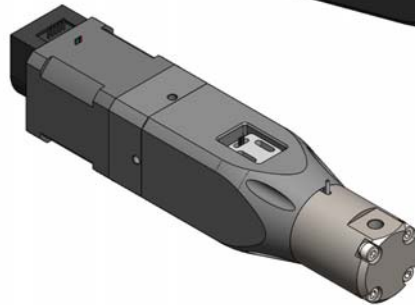


OEM Inquiries are welcome

The *PrimeLine* Syringe Pump without integral drive/controller for stepper motor, check valves, or other custom features are available, please contact us.

OEM Power Option: 24 VDC, 3 A Max

Standard Check Valve Configuration



3D Image

Single Port and Encorder Options

Analytical Scientific Instruments US, Inc.
3023 Research Drive Richmond CA 94806 USA
www.hplc-asi.com
Ph:800-344-4340
Customer Service: info@hplc-asi.com